



“ We are doing the same and more in less time, less mistakes, less dependencies, more control ... it is just so much more consistent *K.Rietveld* ”



Celcus Case: BAM Woningbouw
Against the grain for Consistency and Flexibility



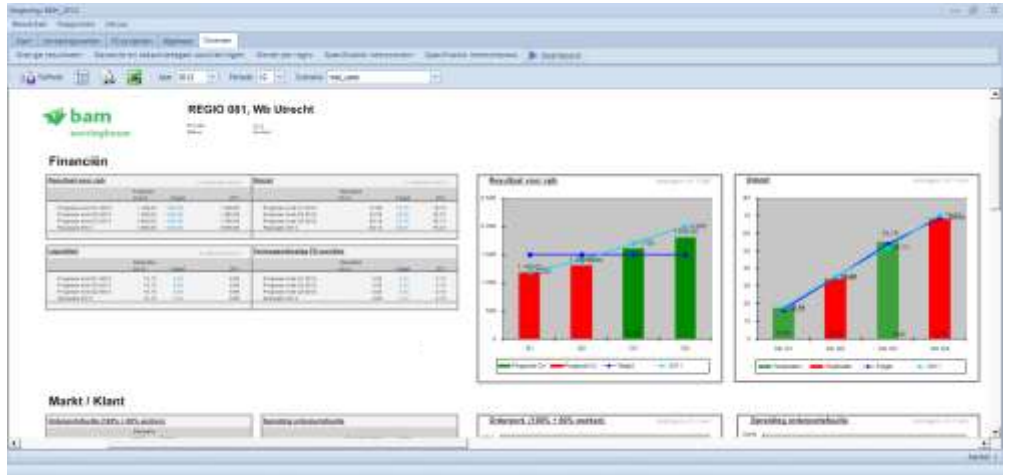


The requirement: Sufficient scenario capabilities and performance

Korstiaan Rietveld, financial director at BAM Woningbouw, broke with the way management information was gathered and created three years ago. Rietveld: “When I joined BAM Woningbouw in 2009 I quickly realized the existing information platform was not up to scratch. For several years a data warehouse initiative was in place to get rid of the vast and complex use of Excel for all internal and external reporting and analysis. The workgroup of controllers that led this initiative from a functional requirements perspective was at best demotivated.” Basically, the introduction of the data warehouse and other BI tooling not only came at great cost for the organization but had not been able to get rid of a single Excel application. The dependency on the IT organization had only grown and the run time of programming was too high. The result was a black box with low flexibility, insufficient scenario capabilities and an unacceptable performance. Envisioning an integrated platform for their project portfolio management, business balanced scorecard, financial consolidation and corporate social responsibility the finance department took a bold decision.



Royal BAM Group NV is a successful European construction group. The Group ranks among the largest companies in Europe. BAM has top market positions in the Netherlands, Belgium, the United Kingdom, Ireland and Germany. BAM Woningbouw is one of the larger operating companies of the Group and the market leader in the Netherlands in the construction of houses. The company works out of nine branches – each with its own regional expertise – employs a workforce of 1,500 to carry out consultancy, development, construction, service and maintenance, and renovation work. BAM Woningbouw has its own engineering & consulting expertise centre which has expert knowledge in a wide range of areas, including advice on quality, lean construction and Building Information Modeling. At any given moment it manages around 250 projects with a yearly revenue of Euro 550-750 million.



BAM Woningbouw Business Balanced Scorecard

Rietveld: “BAM Woningbouw was one of the first to implement BI software which was promoted as a corporate standard. Nonetheless we decided to start all over again using different technology: the existing BI technology simply did not live up to our expectations.”

“In the process of determining the list of requirements for our tool selection we were introduced to Jedox by chance. A trusted consultancy partner had only recently discovered this new product. Taken in by their enthusiasm and product highlights they also had a very simple approach: just give us one of your Excel applications. The swift demonstration of our own Excel application in the Jedox Suite was frankly amazing. Being cautious of letting down our controller workgroup with yet another disappointment we had a second demonstration with the whole team. Needless to say, they had their questions ready: can it do this? Can it do that? And yes, for the most part it could be demonstrated instantly.”

What really convinced BAM Woningbouw to proceed with Jedox and Celcus as their partners is the step by step approach. A risk-free option that was provided was to fully migrate one of their Excel applications to Jedox against a fixed, no cure-no pay fee. Having said that, the investment itself was nothing we were accustomed to. Rietveld: „After having completed the first application within months, we invested less than 30.000 Euro in software fees enabling 60 users to work with the application.”



Korstiaan Rietveld,
Financial Director BAM Woningbouw



The solution at a glance: Fewer mistakes, less dependencies, more control

Jedox and Celcus provided BAM Woningbouw a BI/CPM platform which enables Integrated Reporting. Rietveld: “We now use the system for our project portfolio management, financial consolidation, business balances scorecard dashboard and overall reporting. It enables us to link our strategy with our operations in the regions. We not only have a day to day insight into the current situation of all our projects but readily made forecasts of our P&L and balance sheet of all the different levels in the organization. These forecasts are the result of the rolling forecast concept that controllers prepare for the regional management that submits the most likely scenario. Controlled by workflow, we are able to report by means of the dashboard provided by the application or by automated connectors linking comments with the numbers in Word or Powerpoint. Next we will integrate our corporate social responsibility reporting within the same environment.”

The benefits of the system are clear: “We are doing the same and more in less time, less mistakes, less dependencies, more control... it is just so much more consistent”, says Korstiaan Rietveld: “It is easy to see the benefit in terms of savings as opposed to how we were doing things. Having the basics right we can make a next step in our reporting: focus not only on what has to be reported but highlight the things that matter. So, besides savings, we are confident Jedox will generate an upside to the business by doing just that.”



BAM Woningbouw requirements:

- 1. Most important was to create consistency. Not only in terms of definitions, modeling, data and reports. Also the number of business intelligence sources should be reduced down to one.*
- 2. Setting up the system by business users instead of programming by IT.*
- 3. Automation of data-extraction from the ERP systems to improve the data quality.*
- 4. Creating sufficient flexibility for skilled controllers to easily create their own analysis, scenarios and reports.*
- 5. Having more control by using workflow.*
- 6. The ability to increase functionality like financial reporting and being able to query on several dimensions.*
- 7. Auditability of both models and the behavior of users.*
- 8. Integration with MS PowerPoint and MS Word*

- | Projects
- | Solutions
- | Services

Projects

Helping our clients to create insight and the ability to drive their business is what we do. Operating at the crossroads of business and IT we offer tailor made solutions through 'projects' to support a wide range of decision making processes across all industries.

Solutions

Based on our best practice projects we strive to offer our clients a growing number of pre-build, comprehensive solutions. We offer solutions in the area of Planning & Control, Financial Consolidation, Project Portfolio Management, Activity Based Management, Public Management and Corporate Social Responsibility.

Services

Driving enduring business benefit to our clients we offer Service Level Agreements for support and Software as a Service (SaaS). Empowering our clients to manage their own information, our centre of expertise offers certified training programs.

BI/CPM Platform

Easy and fast to use, administer and extend, the award-winning Jedox gives you the world's most innovative Business Intelligence Analytics. Executives deliver the benefit to the entire business and maximise ROI. Your business users own the solution. Powerful OLAP features make controlling and planning faster and more consistent. Jedox combines multi-dimensional, in-memory GPU-power with the convenience and graphic possibilities of Excel, Mobile, and Web.

